

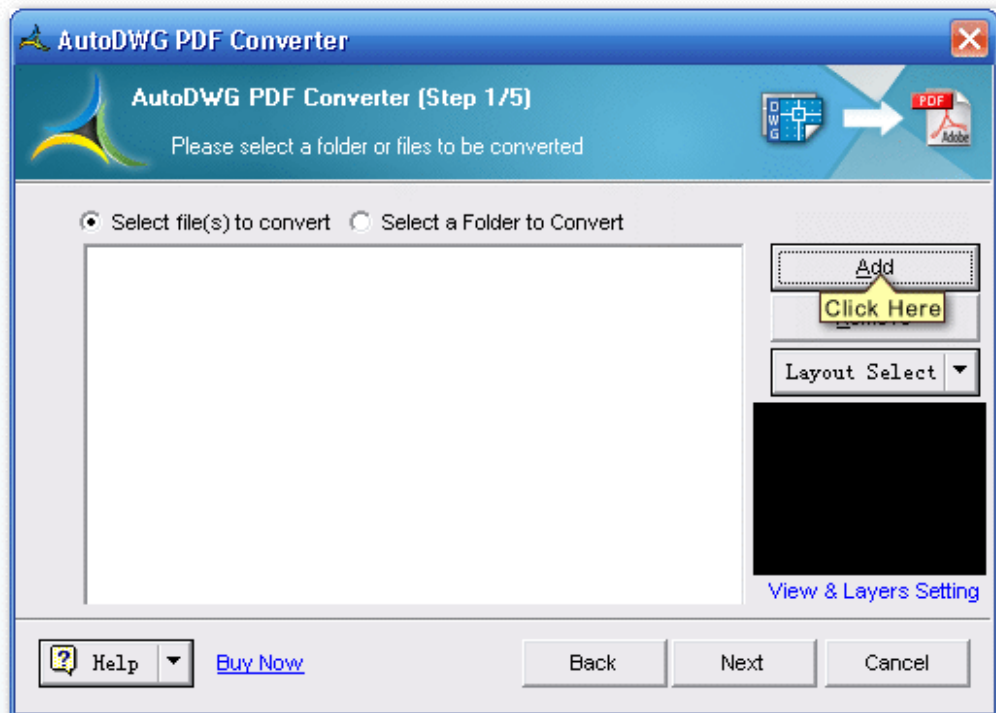
aXsware DWG to PDF Converter

– Quick start for converting drawings to PDF format

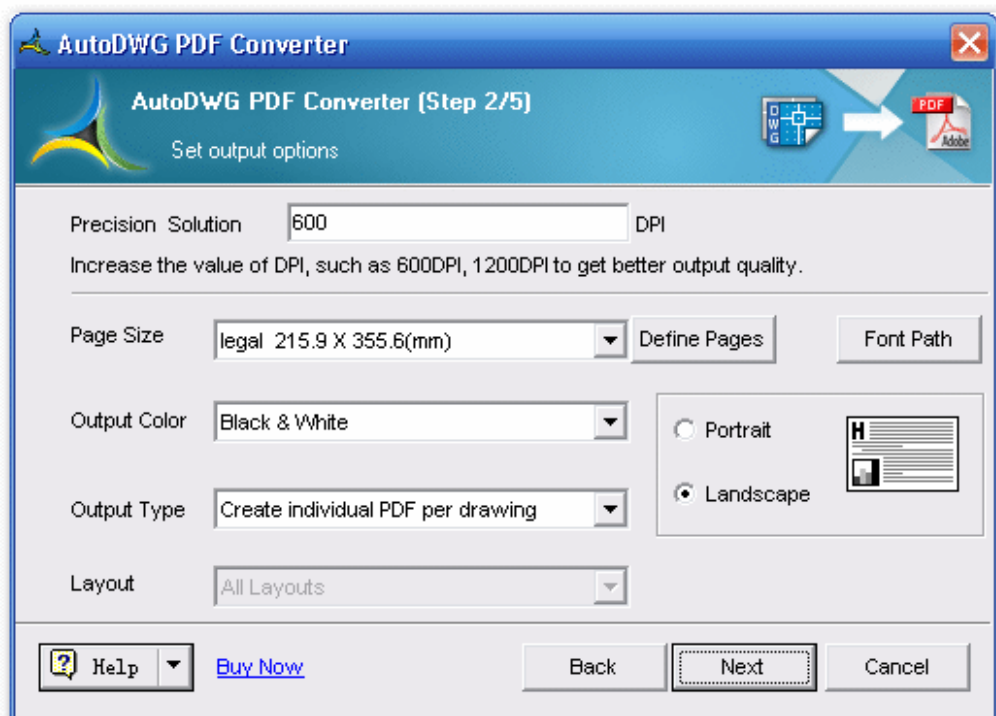
There are 5 steps to get drawings including DWG, DXF and DWF converted into PDF:

Step 1 Add Files:

Click the button "Add" to add a file or a folder to convert, set Layout and Layers or leave them as default, then click on the button "Next":



Step 2 Set options or leave them as default:



Additional setting:

§ **Precision Solution**

§ **You may input a value such as 300/ 600 or 1200 on:**

Higher value such as 1200 DPI for better output quality, and this will increase the created *.pdf file size.

§ **Page Size**

§ **Click on the pull down menu and select the standard paper size:**

This allows you set the size of the paper.

§ **Click on the button "Define Pages":**

Let you Add or Edit the page size, this will take you to another dialog box, you may click on "Add" to create new page size name, and from the list double click on the new item, then you can set up the customized page size in mm or inch.

§ **Font/XREF Path**

§ **Browse and add more *.shx font file(s) to the list:**

If the text quality is not satisfactory such as replaced or size changed, please add the SHX font directories to the SHX font directories list.

§ **Output Color**

§ **Click on the pull down menu and select the background color:**

Choose from 0 ~ 255 AutoCAD color index.

§ **Output Type**

§ **Create individual PDF per drawing:**

For example, to batch convert 12 DWG files to 12 separated PDF files, file created as same names, only the extension file name changed to *.pdf.

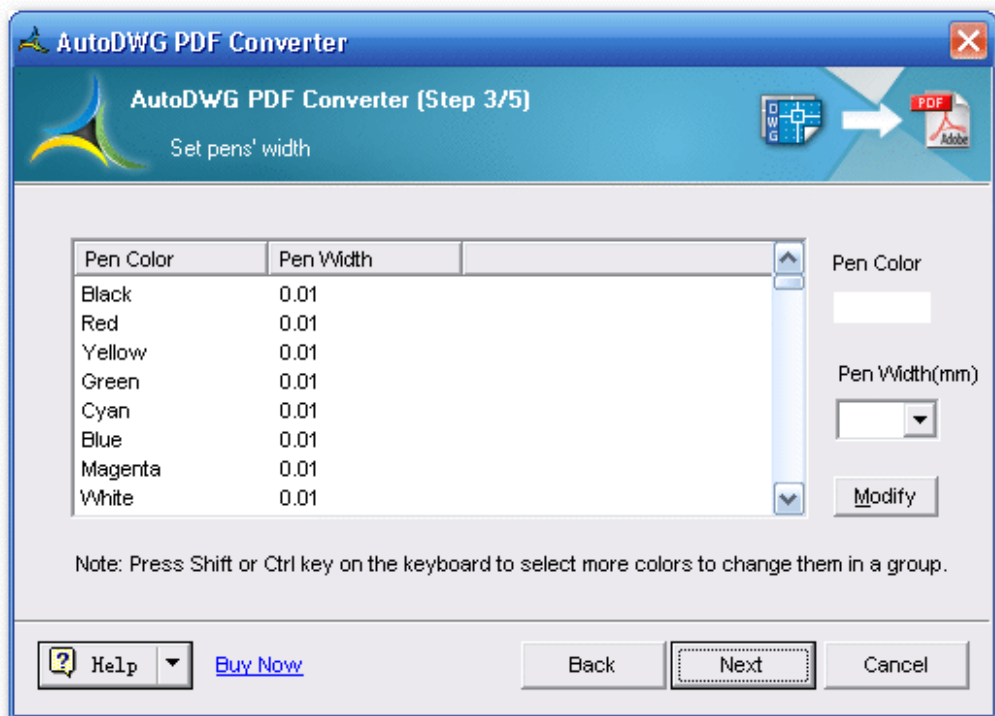
§ **Merge into single PDF:**

For example, to batch convert 12 DWG files to 1 single PDF files, DWG files are converted as several pages in this PDF file.

§ **A PDF file per layout:**

Allows you to create several PDF files, there is only 1 page in each PDF file, which converted from 1 layout of the DWG file(s).

Step 3 Set pen widths, or leave them as default:



Additional settings:

§ **Background Color**

§ **Click on the pull down menu and select the several of color types**

256 level color, Black & White, 256 level gray are the options color and weight column.

§ **Load CTB File**

§ **Click on the 'Load CTB file' button and select CTB file**

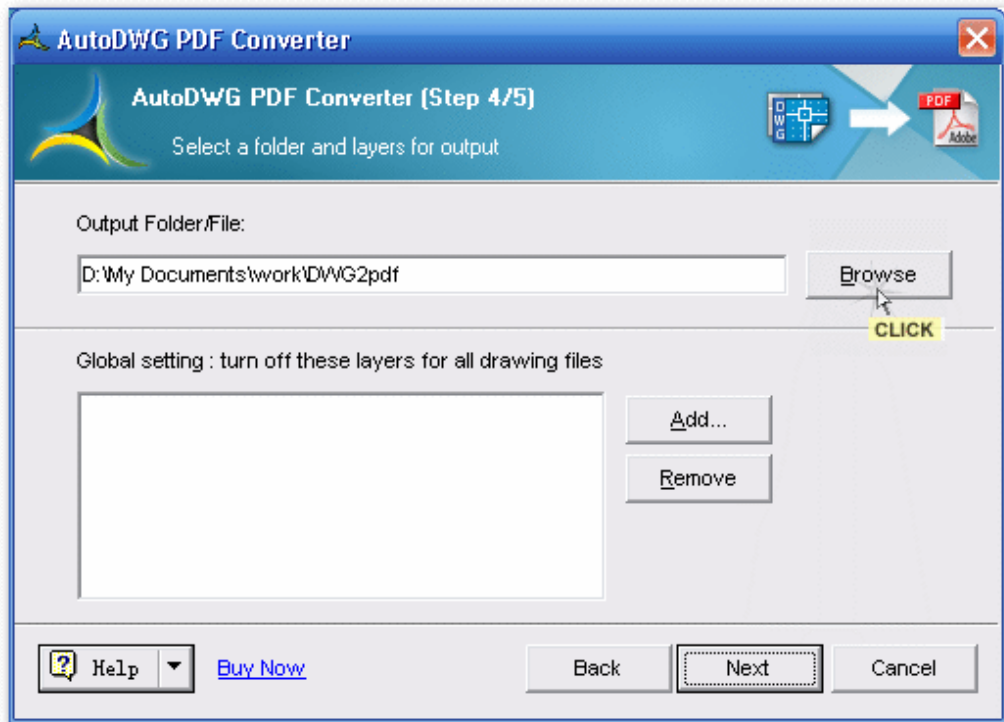
CTB Line weight and color will be added and shown in the list.

§ **Use CAD Default Line Weight**

§ **If check this box, the converter will choose from the original drawing for the default line weight and color of lines, blocks, etc.**

Use the current drawing line weight and color setting to convert.

Step 4 Specify an output folder (or a file), set up the invisible layers to be turned off for all the drawings, or leave them as default:



Additional settings:

§ Reduce the Output File Size

§ In order to reduce the output file size, please uncheck the box of "Fill TTF Text" in step 4/5.

If a drawing contains True type fonts, as the texts increasing, the output PDF file size will be enlargement.

This is because characters carry font styles and solid entities. It is the solid entities cause the enlargement of the output file size.

Here is the character looks like in a DWG drawing:



When convert the drawing to a PDF, if you would like to get a smaller size of the PDF, please unselect "Fill TTF Text", and the converted texts will only preserve the font style but the solid entities will lost. As a result, the converted PDF file size will be much smaller and the process of the conversion will take less time.

Here is the character looks like in a converted PDF:



However, if you leave the box checked in step 4, you can still get the filled texts in a converted PDF.

§ Create searchable texts in PDF:

To create searchable texts please tick the checkbox of "Retain Truetype fonts" and the created PDF will be searchable in texts. This will also reduce the file size.

However, SHX fonts cannot be created as searchable texts in PDF yet as SHX fonts was created with lines but not texts in the converted PDF.

§ Add Watermark

§ Add customized watermarks (pro version only):

To add watermark, please check the 'Add Watermark' box and click on the 'Set Watermark' button.

1. Open or save a watermark: Click on the 'open' or 'save' button to open an existing watermark or save the current watermark in a specific path and name.
2. Insert test watermark: You can freely add texts in watermark and set text

fonts, height, rotation, alignment and position on layouts.

3. Insert image watermark: Add company logo or other images as watermark to preserve your copies of intellectual drawings.

§ **PDF Encryption**

§ **Set permissions for the created PDF files:**

- Print permission
- Copy permission
- Modify permission

§ **Add password for the created PDF files:**

Add password for your PDF to prevent others from viewing your drawings.

Step 5 And in few seconds up to minutes, the conversion is completed.

You may click on the button "Open File/Folder" to view the created PDF file(s). Or click on button "Cancel" to exit the conversion program.

