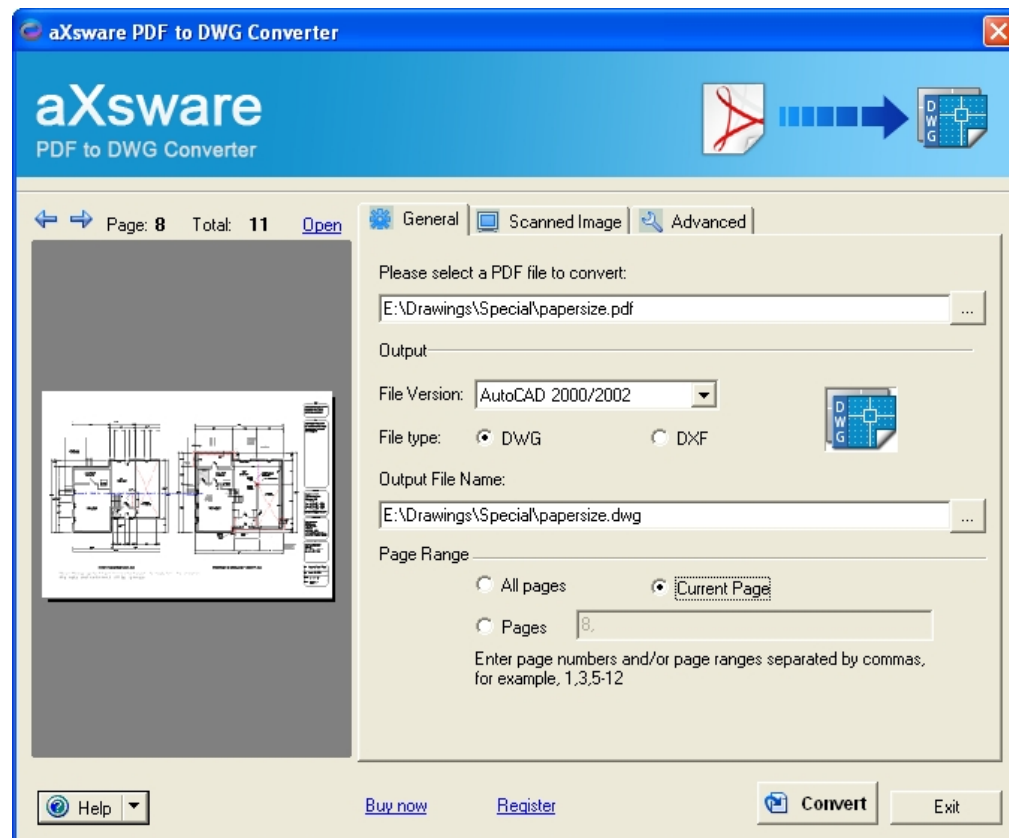


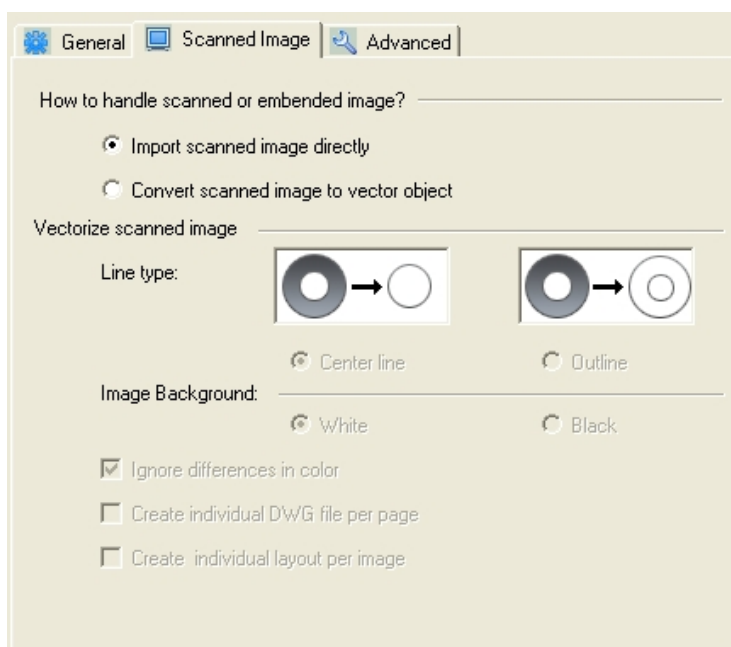
# aXsware PDF to DWG Converter

– Convert PDFs derived from CAD electrical copies into DWG format

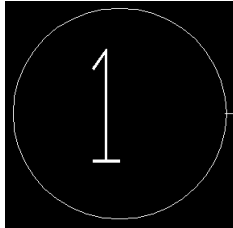
- Please double click the shortcut on desktop to execute PDF to DWG Converter:
  - From “select a PDF file to convert”, click “...” to choose a PDF file to be converted;
- Please choose the output drawing version (R14~2007, 2008 and 2009 version please choose 2007 version to convert) and the output format (DWG/DXF);
- The output file path will be automatically added as the input PDF file path, you can click “...” of the output file to choose another output file folder and DWG file name.



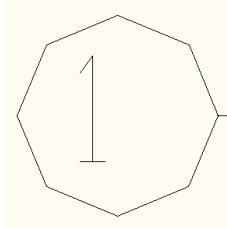
- Please keep the settings unchecked in the “Scanned Image” tab if you are converting vector PDF:



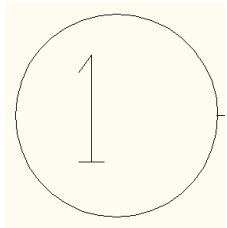
- Please click “Convert” and wait for the conversion result;
- After the conversion finished, a pop-up window will ask if you want to view the conversion result, click “Yes” to view or “No” to exit.
  - \* If the original PDF file contains a transparent text layer which could be converted by PDF2DWG converter, when you open the converted DWG, there will be overlapped texts. Please turn off the “at\_Text” layer in AutoCAD and save the new drawing.
  - \* If there are hidden entities, please try to turn off layer “at\_Solid” and this will remove the Solid entities and thus all lines underneath will be shown up.
  - \* Some circles need “regen” in command line of AutoCAD to show the accuracy.
    - When preview in PDF2DWG converter, the arcs are smooth:



- Open the drawing in ACAD, and get this:

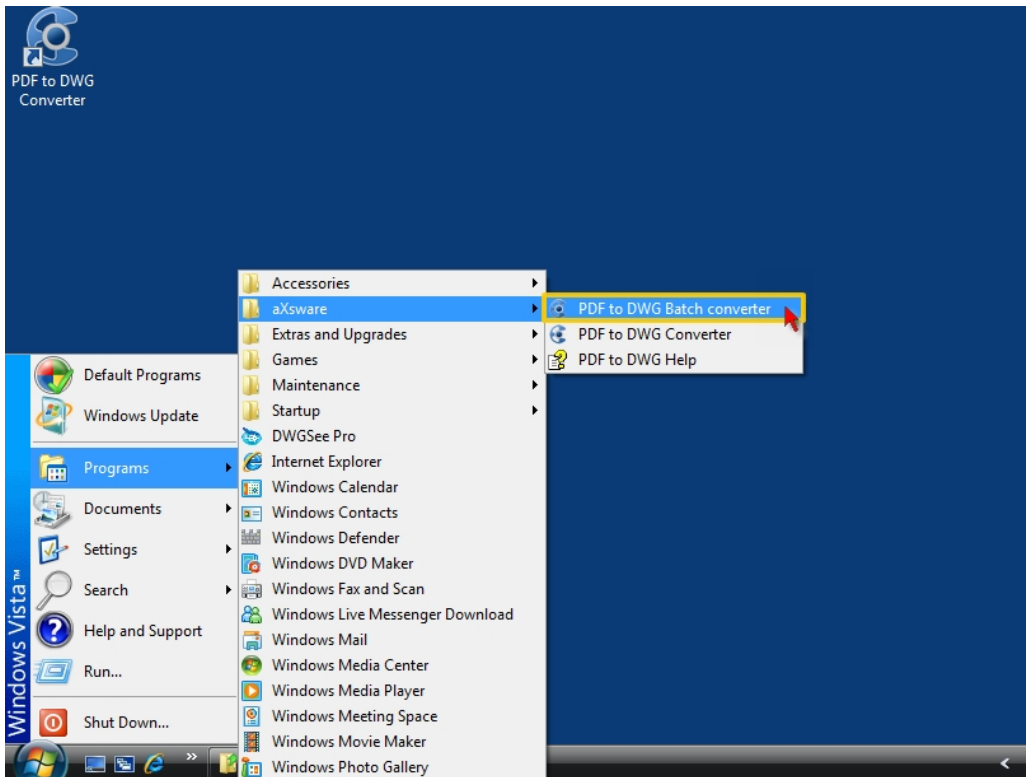


- After “regen” in command line of ACAD:

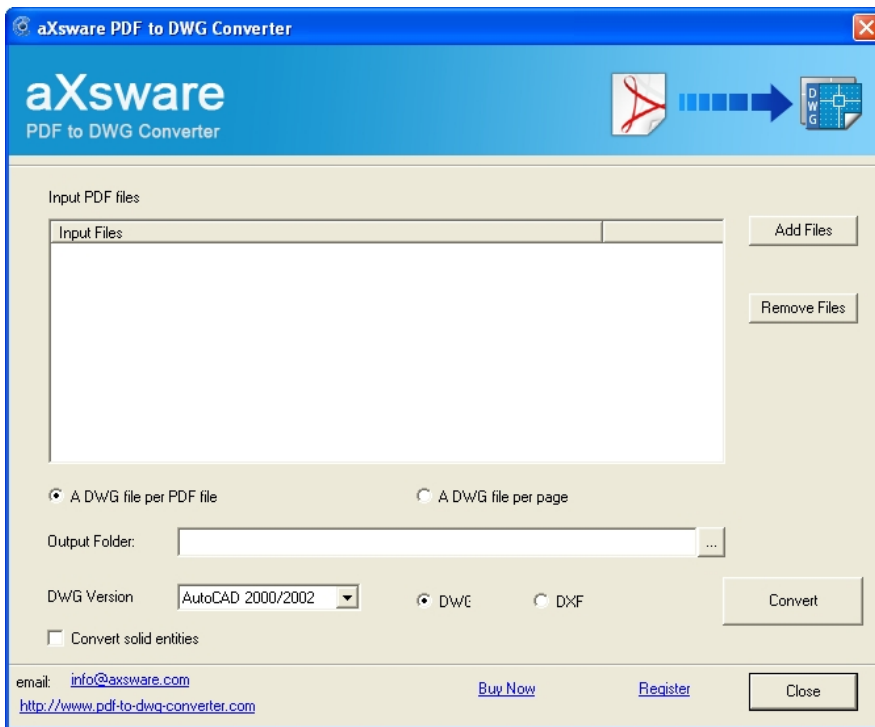


– Batch processing

- From “Windows → Start → All programs → aXsware → PDF to DWG Batch Converter”,



- open the shortcut for “PDF to DWG Batch Converter”:



- Click “Add files” to selected PDF files to be converted;
- Select conversion type for converting “a DWG file per PDF file” or “a DWG file per page”;
- Click the “...” button to set the output folder path;
- Choose the output drawing version (R14~2007. version 2008 and 2009 please choose 2007 version to convert) from the dropdown list and the output format (DWG or DXF);
- Tick “Convert solid entities” checkbox if necessary;
- “Convert” and wait for the conversion.

When the conversion is finished, please go to the output folder as you specified to view the converted drawings.